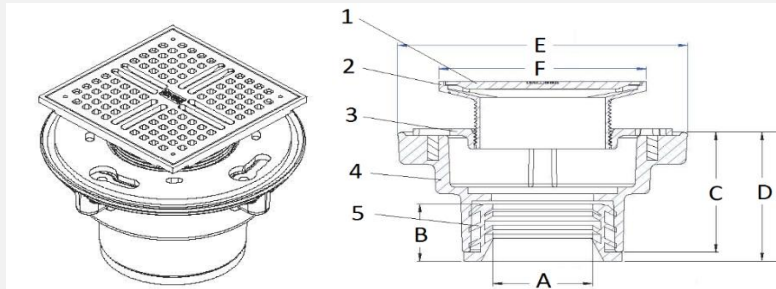


FLOOR DRAIN CAST IRON BODY WITH POLISHED NICKEL BRONZE SQUARE STRAINER
MODEL NO: **R3106-NS**



✓ **PRODUCT DESCRIPTION:** Epoxy Coated Cast Iron Body Floor Drain. Combination invertible clamp and adjustable collar with Square polished nickel bronze strainer.

✓ **CRITICAL TO QUALITY (CTQ) DIMENSION :**

DIMENSION	DESCRIPTION	DIMENSION IN INCHES {mm}		
		2	3	4
A	PIPE SIZE	2 (49)	3 (73)	4 (103)
B	GASKET HEIGHT	1-3/4 (45)	1-15/16 (50)	1-3/4 (45)
C	C.I BODY HEIGHT	4-3/16 (106)	4-3/16 (106)	4-3/16 (106)
D	C.I BODY HEIGHT WITH GASKET	4-1/2 (114)	4-1/2 (114)	4-1/2 (114)
E	C.I BODY DIAMETER	8-3/8 (213)	8-3/8 (213)	8-3/8 (213)
F	SQUARE STRAINER TOP SIZE	5-63/64 (152)	5-63/64 (152)	5-63/64 (152)
STRAINER OPEN AREA Sq. In. (cm ²)		13 (84)		
OUTLET TYPE		INSIDE GASKET		

✓ **LIST OF COMPONENTS :**

COMPONENT	DESCRIPTION
1	NS - POLISHED NICKEL BRONZE SQUARE STRAINER GRATE
2	POLISHED NICKEL BRONZE SQUARE STRAINER FRAME
3	CAST IRON CLAMPING COLLAR
4	CAST IRON BODY
5	NEO LOC GASKET
6	GI HEX BOLT 10X25
7	GI PLATE WASHER ID 11.3 X OD 25.7 X 2.5MM THICK

✓ **PREFIXES :**

NS – Polished Nickel Bronze Strainer and Frame
SS – Stainless Steel 304 Strainer and Frame